






# LEARN@SBI

**Training Calendar  
Jul - Dec**

**2026**



Subscribe to know more about upcoming programmes/ grants on workforce development

-  [FutureReadyWorkforce@sbfi](mailto:FutureReadyWorkforce@sbfi)
-  [Buildingfuturereadyworkforce](https://t.me/Buildingfuturereadyworkforce)
-  [futurereadyworkforce\\_sbf](https://www.instagram.com/futurereadyworkforce_sbf)
-  [learn@sbfi.org.sg](mailto:learn@sbfi.org.sg)
-  [www.sbf.org.sg](http://www.sbf.org.sg)

# How to read this calendar

## Our 6 Action Agendas



### **Scaled Internationally**

Helps businesses access new markets, diversify revenue streams, and build resilience through global expansion strategies.



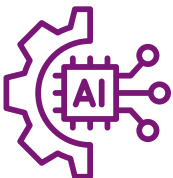
### **Skills-Empowered**

Strengthens capabilities by developing leadership, customer engagement, and operational excellence for sustainable growth.



### **Sustainability-Centric**

Positions businesses for long-term success by embedding ESG principles and sustainable practices into business operations.



### **Smart-Enabled**

Accelerates digital transformation, enabling businesses to leverage technology for efficiency, data-driven decisions, and competitive advantage.



### **Socially Impactful**

Enhances brand reputation and stakeholder trust through inclusive practices and community engagement initiatives.



### **Synergistic TACs**

Fosters collaboration and shared resources through partnerships with Trade Associations and Chambers, amplifying collective impact.

*\*Workshops build capability. CCPs support hiring and reskilling*

## Our Programme Depth

- **Executive Leadership Series**  
For business owners, CXOs and senior leaders making strategic decisions.
- **Applied Masterclasses**  
For functional leads and managers driving implementation and change.
- **Professional Workshops**  
For professionals building job-ready and future-ready skills.

### **Turn Hiring Cost into Capability Investment with Career Conversion Programme**

Receive up to 90% salary support to convert new or existing staff into job-ready roles

- International Growth Pathway → Overseas Markets Immersion Programmes (OMIP)
- SME Transformation Pathway → CCP-SMEs Professionals (CCP-SME)
- Wholesale Trade Pathway → CCP-Wholesale Trade Professionals (CCP-WSTP)
- Sustainability & Green Skills Pathway → CCP-Sustainability Professionals (CCP-S)
- Human Capital Growth Pathway → CCP-Human Capital Professionals (CCP-HC)

# HOW SHOULD YOU BUILD YOUR WORKFORCE IN 2026 ?

## Choose your strategy.

### **A Hire New Talent (Lower Cost)**

Use CCP Salary Support +  
SBF Training

### **B Reskill Existing Employees**

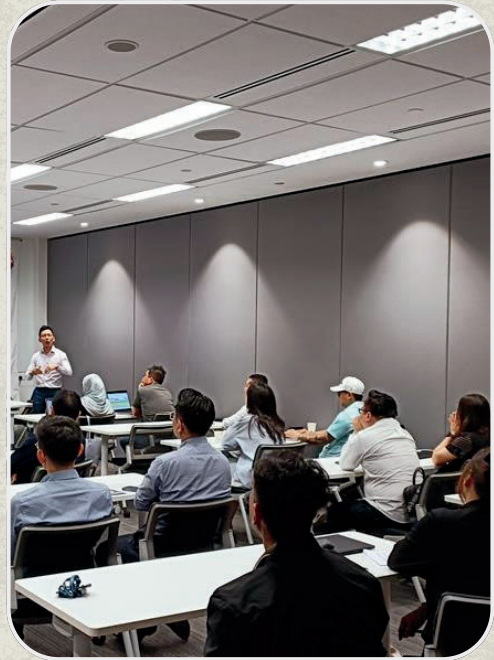
Redeploy and upskill with  
workshops

### **C Expand Overseas**

Build Trade & International  
Capability

### **D Improve Productivity (AI/Digital)**

Upskill instead of hiring new  
roles



For More Information >

[CCP@SBF.ORG.SG](mailto:CCP@SBF.ORG.SG)

# TURN MANPOWER COST INTO FUNDED CAPABILITY BUILDING



- ✓ Hire or reskill employees using Career Conversion Programme (CCP)
- ✓ Up to 90% salary support
- ✓ Reduce hiring risk
- ✓ Faster time-to-productivity

## RISING WORKFORCE COSTS - STABILISE TEAM WITHOUT OVERHIRING THIS JULY



Rising manpower costs and uncertain demand are forcing business to rethink how they build and sustain their workforce.

### Featured Workshops

- HR / Management (CCP-HC)**
  - Workforce Restructuring & Termination of Employment
  - Masterclass on Payroll & HR Administration
  - 👉 Managing Cost, restructuring teams, compliance
- Sales & Business Development Teams (CCP-SME)**
  - Strategic Sales Planning
  - Harnessing Generative AI for Sales Performance
  - 👉 Driving revenue in uncertain demand conditions



## MARGINS UNDER PRESSURE - STRENGTHEN FINANCIAL CONTROL THIS AUGUST



Shrinking margins and unpredictable costs are making financial control and decision-making more critical than ever.

### Featured Workshops

- Finance/ Management (CCP-SME | CCP-WST)**
  - Effective Cashflow Management & Budgeting
  - GST Schemes & Controls
  - 👉 Improve cashflow visibility and financial control
- Sales & Business Development Teams (CCP-SME | CCP-WST)**
  - Smart Negotiation for Effective Wins
  - Networking for Business Success
  - 👉 Improve deal conversion and partnerships



## GLOBAL EXPANSION IS RISKY - BUILD TRADE CAPABILITY FIRST THIS SEPTEMBER



Expanding into global markets brings opportunities, but without the right trade knowledge, mistakes can be costly.

### Featured Workshops

- Export/ Trade Roles (OMIP)**
  - Mastering Incoterms 2020
  - Managing Imports and Exports in International Trade
  - 👉 Execute cross-border transactions
- Operations/ Compliance (OMIP)**
  - Determining HS Codes in International Trade
  - Practical Sea Freight Forwarding for Global Trade
  - 👉 Manage compliance efficiently

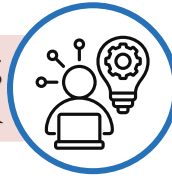


# TURN MANPOWER COST INTO FUNDED CAPABILITY BUILDING



- ✓ Hire or reskill employees using Career Conversion Programme (CCP)
- ✓ Up to 90% salary support
- ✓ Reduce hiring risk
- ✓ Faster time-to-productivity

## AI IS RESHAPING JOBS - IS YOUR TEAM READY? THIS OCTOBER



AI and digital transformation are advancing rapidly, creating a growing gap between business needs and workforce capabilities.

### Featured Workshops

#### 👤 Managers (CCP-SME | CCP-WST)

- Transform Business Workflows with Generative AI
- AI Agent Discovery: Find the Right Use Case
- 👉 Identify where AI can drive efficiency

#### 👤 Functional Specialists (CCP-SME | CCP-WST)

- AI in Finance/ Sales Applications
- AI for Data Analysis
- 👉 Apply AI directly to business functions



## RISING COMPLIANCE & TRADE RISKS - PROTECT YOUR BUSINESS THIS NOVEMBER



Rising regulatory complexity and cross-border risks are exposing businesses to costly penalties and compliance gaps.

### Featured Workshops

#### 💰 Finance/ Tax Teams (CCP-SME | CCP-WST)

- Corporate Tax Planning
- Transfer Pricing Compliance in Asia Pacific
- 👉 Optimise tax strategy and reduce exposure

#### 🌍 Trade/ Compliance (OMIP | CCP-SME)

- Risks and Frauds in International Trade
- Practical Sea Freight Forwarding for Global Trade
- 👉 Managing international trade

## FUTURE WORKFORCE GAPS - BUILD CAPABILITY BEFORE ITS TOO LATE THIS DECEMBER



As the business landscape evolves, workforce transformation is more important than ever.

### Featured Workshops

#### 🌱 Sustainability/ Management (CCP-S | CCP-SME)

- Masterclass on Sustainability for Senior Management
- Structured Career Planning Workshop
- 👉 Drive ESG Strategy and long-term positioning

#### 👤 HR/ Workplanning Teams (CCP-HC | CCP-SME)

- IRAS Year-End Reporting
- IHRP Certified Workshops
- 👉 Future-proof workforce and improve retention





**Scaled Internationally**  
Workshop designed to support business overseas expansion

| S/N | Programmes   | Member (Incl GST) | Non-Member (Incl GST) | Duration | Delivery Mode | Dates |         |       |         |       |       | CCP  |
|-----|--|-------------------|-----------------------|----------|---------------|-------|---------|-------|---------|-------|-------|------|
|     |  |                   |                       |          |               | Jul   | Aug     | Sep   | Oct     | Nov   | Dec   |      |
| 1   | Mastering Incoterms 2020   | \$520.00          | \$738.00              | 1 Day    | Classroom     | 17    |         | 17    |         | 19    |       | OMIP |
| 2   | Comprehending Letters of Credit: Effective Management on How to Apply and Negotiate        | \$870.00          | \$1,524.00            | 2 Days   | Classroom     | 7 & 8 |         | 8 & 9 |         | 5 & 6 |       | OMIP |
| 3   | Managing Imports and Exports in International Trade  | \$870.00          | \$1,524.00            | 2 Days   | Classroom     |       | 17 & 18 |       | 12 & 13 |       | 3 & 4 | OMIP |
| 4   | Corporate Tax Planning: Maximizing Tax Benefits  | \$450.00          | \$668.00              | 1 Day    | Classroom     | 16    |         | 17    |         | 19    |       | OMIP |
| 5   | Practical Sea Freight Forwarding for Global Trade  | \$590.00          | \$808.00              | 1 Day    | Classroom     | 24    |         | 25    |         | 27    |       | OMIP |
| 6   | Risks and Frauds in International Trade: How to Identify and Minimise                      | \$520.00          | \$738.00              | 1 Day    | Classroom     |       | 19      |       | 21      |       |       | OMIP |
| 7   | Understanding the Do's and Dont's of Shipping Documentation                                | \$347.00          | \$565.00              | 1/2 Day  | Classroom     |       | 21      |       |         | 20    |       | OMIP |
| 8   | FTA: Tariff Finder and Manufacturing Cost Statement Workshop                               | \$335.00          | \$550.00              | 1/2 Day  | Classroom     |       | 20      |       |         | 12    |       | OMIP |
| 9   | Determining HS Codes in International Trade and Business                                   | \$580.00          | \$798.00              | 1 Day    | Classroom     |       | 25      |       |         | 5     |       | OMIP |
| 10  | Understanding the Conditions to Apply 0% GST on Business Transactions for Exports of Goods | \$335.00          | \$550.00              | 1/2 Day  | Classroom     |       | 20      |       |         | 12    |       | OMIP |
| 11  | Eyeing Asia : Investment Law In Vietnam  | \$268.00          | \$468.00              | 1/2 Day  | Classroom     |       |         | 10    |         |       |       | OMIP |
| 12  | Eyeing Asia : Employment Law In Vietnam  | \$268.00          | \$468.00              | 1/2 Day  | Classroom     | 20    |         | 11    |         |       |       | OMIP |
| 13  | Eyeing Asia : Investment Law In Malaysia   | \$268.00          | \$468.00              | 1/2 Day  | Classroom     |       | 21      |       |         |       |       | OMIP |
| 14  | Eyeing Asia : Employment Law In Malaysia   | \$268.00          | \$468.00              | 1/2 Day  | Classroom     |       |         |       | 30      |       |       | OMIP |
| 15  | Eyeing Asia : Investment Law In Indonesia  | \$268.00          | \$468.00              | 1/2 Day  | Classroom     |       |         |       |         | 26    |       | OMIP |
| 16  | Eyeing Asia : Employment Law In Indonesia  | \$268.00          | \$468.00              | 1/2 Day  | Classroom     |       | 24      |       |         |       |       | OMIP |
| 17  | Eyeing Asia : Investment Law In Thailand   | \$268.00          | \$468.00              | 1/2 Day  | Classroom     |       |         |       |         | 27    |       | OMIP |
| 18  | Eyeing Asia : Employment Law In Thailand   | \$268.00          | \$468.00              | 1/2 Day  | Classroom     |       |         | 18    |         |       |       | OMIP |
| 19  | Eyeing Asia : Investment Law In Philippines  | \$268.00          | \$468.00              | 1/2 Day  | Classroom     |       | 17      |       |         |       |       | OMIP |
| 20  | Eyeing Asia : Employment Law In Philippines  | \$268.00          | \$468.00              | 1/2 Day  | Classroom     |       |         |       | 21      |       |       | OMIP |



**Sustainability-Centric**  
Workshop designed to support adoption of ESG (Environmental, Social, Governance) principles

| S/N | Programmes   | Member (Incl GST) | Non-Member (Incl GST) | Duration | Delivery Mode | Dates |        |     |     |     |     | CCP   |
|-----|--|-------------------|-----------------------|----------|---------------|-------|--------|-----|-----|-----|-----|-------|
|     |  |                   |                       |          |               | Jul   | Aug    | Sep | Oct | Nov | Dec |       |
| 1   | Driving Sustainable Procurement Across Supply Chain                        | \$558.00          | \$758.00              | 1 Day    | Classroom     | 8     |        |     | 6   |     |     | CCP-S |
| 2   | Sustainability Reporting For Businesses: Benchmarks, Frameworks, Practices | \$558.00          | \$758.00              | 1 Day    | Classroom     | 10    |        |     | 7   |     |     | CCP-S |
| 3   | Practical Guide To ESG & Sustainability + Managing Sustainability Risk     | \$998.00          | \$1,398.00            | 1 Day    | Classroom     |       |        | 17  |     |     |     | CCP-S |
| 4   | Managing ESG : From Strategy Planning To Integration                       | \$545.00          | \$763.00              | 2 Day    | Classroom     |       | 24, 25 |     |     |     |     | CCP-S |
| 5   | Masterclass on Sustainability for Senior Management                        | \$558.00          | \$758.00              | 1/2 Day  | Classroom     | 3     | 7      | 4   | 2   | 6   | 4   | CCP-S |



**Skills-Empowered**  
Workshop designed to strengthen business capabilities for sustainable growth

| S/N | Programmes   | Member (Incl GST) | Non-Member (Incl GST) | Duration | Delivery Mode | Dates |     |     |     |     |     | CCP               |
|-----|--|-------------------|-----------------------|----------|---------------|-------|-----|-----|-----|-----|-----|-------------------|
|     |  |                   |                       |          |               | Jul   | Aug | Sep | Oct | Nov | Dec |                   |
| 1   | Effective Cashflow Management, Budgeting & Analysis              | \$528.00          | \$728.00              | 1 Day    | Classroom     | 21    |     |     | 6   |     |     | CCP-SME   CCP-WST |
| 2   | Strategy For Developing Effective Costing & Budgeting Management | \$528.00          | \$728.00              | 1 Day    | Classroom     |       | 25  |     |     |     |     | CCP-SME   CCP-WST |
| 3   | Measuring & Analysing Financial KPIs From Business Perspective   | \$528.00          | \$728.00              | 1 Day    | Classroom     |       |     | 8   |     |     |     | CCP-SME   CCP-WST |

\*All Information Provided is Correct at the Time of Printing and is Subject to Change Without Notice.

\*All Prices Are Inclusive of 9% GST

Build your workforce capability while saving up to 90% on salary costs with CCP.

For customised training, please contact us at learn@sbf.org.sg



## Skills-Empowered Workshop designed to strengthen business capabilities for sustainable growth

| S/N | Programmes  | Member (Incl GST) | Non-Member (Incl GST) | Duration | Delivery Mode | Dates |     |       |     |     |     | CCP                        |
|-----|---|-------------------|-----------------------|----------|---------------|-------|-----|-------|-----|-----|-----|----------------------------|
|     |   |                   |                       |          |               | Jul   | Aug | Sep   | Oct | Nov | Dec |                            |
| 4   | A Practical Approach To Vetting & Securing A Joint Venture Agreement                                    | \$388.00          | \$588.00              | 1/2 Day  | Classroom     | 14    |     |       |     | 10  |     | CCP-SME   CCP-WST          |
| 5   | From Private To Public : Preparing A Successful IPO Listing   | \$388.00          | \$588.00              | 1/2 Day  | Classroom     |       | 17  |       |     |     |     | CCP-SME                    |
| 6   | Fair Practices In Procurement & Tenders : Combat Bid-Rigging & Unethical Conducts                       | \$388.00          | \$588.00              | 1/2 Day  | Classroom     | 8     |     |       | 14  |     |     | CCP-SME                    |
| 7   | Safeguarding Personal Data For Businesses : Key Obligations & New Amendments                            | \$388.00          | \$588.00              | 1/2 Day  | Classroom     |       | 4   |       |     | 5   |     | CCP-SME                    |
| 8   | Essential Contract Law For Non-Legal Professionals  | \$528.00          | \$728.00              | 1 Day    | Classroom     | 7     |     |       | 15  |     |     | CCP-SME   CCP-WST          |
| 9   | Employment Law, Workplace Fairness & Grievance Management : Build Fair, Safe & Compliant Workplaces     | \$558.00          | \$758.00              | 2 Day    | Classroom     | 16    |     |       |     | 12  |     | CCP-SME   CCP-HC           |
| 10  | Strategic Growth Through Mergers & Acquisitions (M&As)  | \$388.00          | \$588.00              | 1/2 Day  | Classroom     |       | 25  |       |     |     |     | CCP-SME                    |
| 11  | Workforce Restructuring & Termination of Employment : Compliance, Communication & Risk Management       | \$388.00          | \$588.00              | 1/2 Day  | Classroom     | 1     |     | 3     |     | 17  |     | CCP-SME   CCP-HC           |
| 12  | AI Governance : Regulatory Frameworks In AI Technologies & Ethical Use                                  | \$388.00          | \$588.00              | 1/2 Day  | Classroom     |       |     | 18    |     |     |     | CCP-SME                    |
| 13  | Build Teamwork & Workplace Synergy Through DISC Profiling Tools   | \$880.00          | \$1,238.00            | 1 Day    | Classroom     | 24    |     |       |     | 6   |     | CCP-SME   CCP-HC           |
| 14  | Team Coaching For Peak Performance with DISC Profiling Tool   | \$880.00          | \$1,238.00            | 1 Day    | Classroom     | 17    |     |       |     | 26  |     | CCP-SME   CCP-HC           |
| 15  | Managing GST Effectively for Businesses   | \$450.00          | \$668.00              | 1 Day    | Classroom     | 10    |     | 4     |     | 20  |     | CCP-SME                    |
| 16  | Strategic Sales Planning  | \$450.00          | \$668.00              | 1 Day    | Classroom     | 2     |     | 1     |     | 3   |     | CCP-SME                    |
| 17  | Networking for Business Success   | \$450.00          | \$668.00              | 1 Day    | Classroom     |       | 13  |       | 9   |     | 3   | CCP-SME                    |
| 18  | Smart Negotiation for Effective Wins  | \$450.00          | \$668.00              | 1 Day    | Classroom     |       | 14  |       | 8   |     | 4   | CCP-SME                    |
| 19  | Transfer Pricing Compliance in Asia Pacific   | \$590.00          | \$808.00              | 1 Day    | Classroom     | 20    |     | 22    |     | 17  |     | CCP-SME                    |
| 20  | GST Schemes & Controls: How to Review Your GST Returns  | \$350.00          | \$568.00              | 1 Day    | Classroom     |       | 18  | 15    |     | 12  |     | CCP-SME                    |
| 21  | Grow Your Business Through Service Excellence   | \$450.00          | \$668.00              | 1 Day    | Classroom     | 19    |     |       | 16  |     |     | CCP-SME                    |
| 22  | Masterclass: Statutory and Annual Compliance for Singapore Businesses                                   | \$580.00          | \$798.00              | 1 Day    | Classroom     | 21    |     |       | 20  |     |     | CCP-SME                    |
| 23  | Understanding the Conditions to Apply 0% GST on Business Transactions for Int Services                  | \$330.00          | \$548.00              | 1 Day    | Classroom     |       | 12  |       |     | 18  |     | CCP-SME                    |
| 24  | Enhancing Critical Thinking, Problem Solving & Creativity with ChatGPT                                  | \$580.00          | \$798.00              | 1 Day    | Classroom     |       | 25  |       |     | 5   |     | CCP-SME                    |
| 25  | Successful Trade Show Outcomes  | \$450.00          | \$668.00              | 1 Day    | Classroom     | 3     |     | 2     |     | 4   |     | CCP-SME                    |
| 26  | Masterclass on Payroll & HR Administration  | \$480.00          | \$680.00              | 1 Day    | Classroom     | 7     | 6   | 3     | 1   | 5   | 3   | CCP-SME   CCP-HC           |
| 27  | Winning Government Tenders: From Identifying Opportunities, Compliance to Crafting Compelling Proposals | \$460.00          | \$660.00              | 1/2 Day  | Classroom     | 28    | 25  | 29    | 27  | 24  | 29  | CCP-SME   CCP-WST          |
| 28  | Masterclass on COMPASS: Gain Insights into the New Framework and Other Work Pass Changes                | \$300.00          | \$500.00              | 1/2 Day  | Classroom     | 14    | 11  | 15    | 13  | 10  | 15  | CCP-HC   CCP-SME   CCP-WST |
| 29  | Masterclass: IRAS Year-End Reporting  | \$488.00          | \$588.00              | 1 Day    | Classroom     | 21    | 18  | 22    | 20  | 17  | 22  | CCP-HC   CCP-SME   CCP-WST |
| 30  | Getting Started with Government Tender  | \$420.00          | \$620.00              | 1/2 Day  | Classroom     | 23    | 20  | 24    | 22  | 26  | 24  | CCP-SME   CCP-WST          |
| 31  | Digital Transformation in Marketing   | \$788.00          | \$888.00              | 2 Weeks  | E-Learning    | 8     | 5   | 2, 30 | 28  | 25  | 23  | CCP-SME   CCP-WST          |
| 32  | Growth Marketing with AI  | \$788.00          | \$888.00              | 2 Weeks  | E-Learning    | 8     |     | 2     | 28  |     | 23  | CCP-SME   CCP-WST          |
| 33  | Leveraging Customers for Growth   | \$788.00          | \$888.00              | 2 Weeks  | E-Learning    | 8     |     | 2     | 28  |     | 23  | CCP-SME   CCP-WST          |
| 34  | Assessing Opportunities in Paid Digital Media   | \$788.00          | \$888.00              | 2 Weeks  | E-Learning    | 22    | 19  | 16    | 14  | 11  | 9   | CCP-SME   CCP-WST          |
| 35  | Implementing an Integrated Digital Marketing Plan   | \$788.00          | \$888.00              | 2 Weeks  | E-Learning    | 22    | 19  | 16    | 14  | 11  | 9   | CCP-SME   CCP-WST          |
| 36  | Social Media Strategy   | \$788.00          | \$888.00              | 2 Weeks  | E-Learning    | 22    | 19  | 16    | 14  | 11  | 9   | CCP-SME   CCP-WST          |
| 37  | Sustainable Future-Ready: Structured Career Planning Workshop   | \$350.00          | \$550.00              | 2 Weeks  | Classroom     | 16    | 13  | 17    | 15  | 19  | 17  | CCP-S                      |
| 38  | IHRP Certified Associate  | \$450.00          | \$650.00              | 1 Day    | Classroom     | 23    | 19  | 23    | 21  | 18  | 23  | CCP-HC                     |
| 39  | Maximising Your SkillsFuture Enterprise Credit (SFEC): A Practical Workshop for SMEs                    | \$98.00           | \$298.00              | 1/2 Day  | Classroom     | 28    | 25  | 29    | 27  | 24  | 29  | CCP-HC   CCP-SME   CCP-WST |

\*All Information Provided is Correct at the Time of Printing and is Subject to Change Without Notice.

Build your workforce capability while saving up to 90% on salary costs with CCP.

\*All Prices Are Inclusive of 9% GST

For customised training, please contact us at [learn@sbf.org.sg](mailto:learn@sbf.org.sg)



**Smart-Enabled**  
Workshop designed to accelerate digital transformation

| S/N | Programmes   | Member (Incl GST) | Non-Member (Incl GST) | Duration | Delivery Mode | Dates |       |           |        |        |       | CCP               |
|-----|--|-------------------|-----------------------|----------|---------------|-------|-------|-----------|--------|--------|-------|-------------------|
|     |  |                   |                       |          |               | Jul   | Aug   | Sep       | Oct    | Nov    | Dec   |                   |
| 1   | [Microsoft Certified] Transform Business Workflows with Generative AI  | \$788.00          | \$1,108.00            | 1 Day    | Classroom     | 31    |       |           |        |        |       | CCP-SME   CCP-HC  |
| 2   | AI-Driven Research & Intelligence (for Financial Services & Investment Professionals)  | \$558.00          | \$758.00              | 1 Day    | Classroom     | 31    |       | 18        |        | 27     |       | CCP-SME           |
| 3   | Master Excel & Data Visualisation with Microsoft 365   | \$938.00          | \$1,318.00            | 2 Days   | Classroom     | 3, 6  |       |           |        |        |       | CCP-SME           |
| 4   | Master Microsoft Power BI For Data Analytics   | \$528.00          | \$728.00              | 1 Day    | Classroom     |       | 14    |           | 16     |        |       | CCP-SME           |
| 5   | Master Power Query & Power Pivot with Microsoft 365  | \$528.00          | \$728.00              | 1 Day    | Classroom     | 20    |       | 11        |        |        |       | CCP-SME           |
| 6   | AI For Data Analysis   | \$478.00          | \$678.00              | 1/2 Day  | Classroom     |       | 4     |           |        |        |       | CCP-SME           |
| 7   | AI Agent Discovery : Find The Right Use Case   | \$478.00          | \$678.00              | 1/2 Day  | Classroom     |       |       | 18        |        |        |       | CCP-SME           |
| 8   | Vibe Coding Essentials   | \$478.00          | \$678.00              | 1/2 Day  | Classroom     |       |       |           | 23     |        |       | CCP-SME           |
| 9   | AI For Workplace Efficiency  | \$478.00          | \$678.00              | 1/2 Day  | Classroom     |       |       |           |        | 30     |       | CCP-SME           |
| 10  | Programming with Python Fundamentals   | \$478.00          | \$678.00              | 1/2 Day  | Classroom     |       |       |           |        |        | 1     | CCP-SME           |
| 11  | Harnessing Generative AI For Sales Performance & Success (for Sales & Business Development Professionals)                      | \$728.00          | \$1,018.00            | 1 Day    | Classroom     |       |       |           | 7      |        |       | CCP-SME           |
| 12  | Applying AI In Finance: Enhancing Efficiency Through Financial Spreadsheet Automation (for Finance & Accounting Professionals) | \$728.00          | \$1,018.00            | 1 Day    | Classroom     |       |       | 9         |        | 11     |       | CCP-SME           |
| 13  | Digital Platform Strategy  | \$788.00          | \$888.00              | 2 Weeks  | E-Learning    | 1, 29 | 26    | 23        | 21     | 18     | 16    | CCP-SME   CCP-WST |
| 14  | Using Data for Positioning Brands  | \$788.00          | \$888.00              | 2 Weeks  | E-Learning    | 22    |       | 16        |        | 11     |       | CCP-SME   CCP-WST |
| 15  | Generative AI: Capabilities and Compromises  | \$788.00          | \$888.00              | 2 Weeks  | E-Learning    | 8, 22 | 5, 19 | 2, 16, 30 | 14, 28 | 11, 25 | 9, 23 | CCP-SME   CCP-WST |
| 16  | Generative AI for Written Communication  | \$788.00          | \$888.00              | 2 Weeks  | E-Learning    | 15    | 12    | 9         | 7      | 4      | 2, 30 | CCP-SME   CCP-WST |
| 17  | Generative and Agentic AI  | \$788.00          | \$888.00              | 2 Weeks  | E-Learning    | 22    | 19    | 16        | 14     | 11     | 9     | CCP-SME   CCP-WST |
| 18  | AI and Digital Technology: Opportunities and Pitfalls  | \$788.00          | \$888.00              | 2 Weeks  | E-Learning    | 15    | 26    |           | 7      | 18     | 30    | CCP-SME   CCP-WST |
| 19  | Identifying New Business Models Enabled by AI  | \$788.00          | \$888.00              | 2 Weeks  | E-Learning    | 15    | 26    |           | 7      | 18     | 30    | CCP-SME   CCP-WST |
| 20  | AI-Powered Operations & Automation with Claude Cowork  | \$588.00          | \$788.00              | 1 Day    | Classroom     | 7, 28 | 21    | 8         | 6      | 3      | 1     | CCP-SME   CCP-WST |
| 21  | AI Business Systems with Claude  | \$588.00          | \$788.00              | 1 Day    | Classroom     | 14    | 25    | 29        | 27     | 24     |       | CCP-SME   CCP-WST |
| 22  | CXO Perspectives: Leading Enterprise Transformation in the Age of AI   | \$699.00          | \$899.00              | 1/2 Day  | Classroom     | 21    |       |           | 6      |        |       | CCP-SME   CCP-WST |



**Socially Impactful**  
Workshop designed for inclusive practices and community engagement

| S/N | Programmes                                | Member (Incl GST) | Non-Member (Incl GST) | Duration  | Delivery Mode | Dates |     |     |     |     |     | CCP            |
|-----|---|-------------------|-----------------------|-----------|---------------|-------|-----|-----|-----|-----|-----|----------------|
|     |   |                   |                       |           |               | Jul   | Aug | Sep | Oct | Nov | Dec |                |
| 1   | Inclusive Hiring: Talent Without Barriers | To be advised     | To be advised         | 1.5 Hours | Classroom     |       | 12  |     | 22  |     |     | Not Applicable |



**Synergistic TACs**  
Workshop designed for TACs and Societies

| S/N | Programmes  | Member (Incl GST) | Non-Member (Incl GST) | Duration | Delivery Mode | Dates |     |     |     |     |     | CCP     |
|-----|---|-------------------|-----------------------|----------|---------------|-------|-----|-----|-----|-----|-----|---------|
|     |   |                   |                       |          |               | Jul   | Aug | Sep | Oct | Nov | Dec |         |
| 1   | SBF-SID Leadership Programme for TAC Council: Strategy Development and Sustainable Governance Programme | \$225.63          | \$225.63              | 1/2 Day  | Classroom     |       | 5   |     |     |     |     | CCP-SME |

\*All Information Provided is Correct at the Time of Printing and is Subject to Change Without Notice.

\*All Prices Are Inclusive of 9% GST

Build your workforce capability while saving up to 90% on salary costs with CCP.

For customised training, please contact us at learn@sbf.org.sg